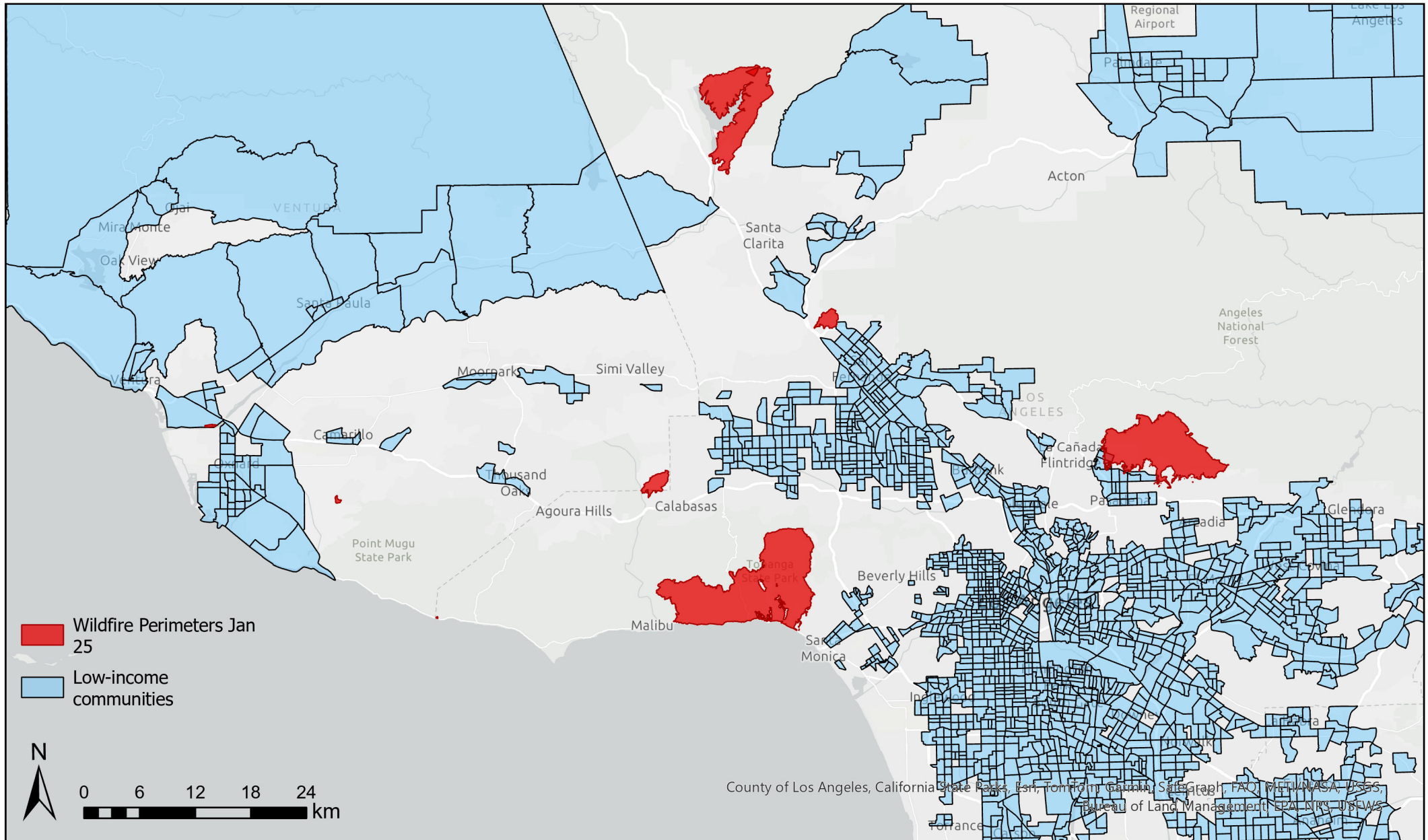


Low-income communities

Census tracts at or below 80% of the state-wide median income, or at or below the threshold designated as low-income by the California Department of Housing and Community Development's (HCD) Revised 2021 State Income Limits.



California Climate Investments https://gis.carb.arb.ca.gov/portal/apps/experiencebuilder/experience/?id=5dc1218631fa46bc8d340b8e82548a6a&page=Priority-Populations-4_0

US Department of Interior Office of Wildland Fire: IRWIN, USDA Forest Service, National Park Service, Fish and Wildlife Service, Bureau of Indian Affairs, and Bureau of Land Management, National Association of State Foresters, US Fire Administration, National Wildfire Coordinating Group <https://www.arcgis.com/home/item.html?id=f72ebe741e3b4f0db376b4e765728339>